



## Two multifunctional buildings on Ilidza near Sarajevo by architect Ahmet Hadrovic

**Ahmet Hadrovic**

Faculty of Architecture, University of Sarajevo, Sarajevo, Bosnia and Herzegovina

\* Corresponding Author: **Ahmet Hadrovic**

---

### Article Info

**ISSN (online):** 2582-7138

**Volume:** 03

**Issue:** 05

**September-October 2022**

**Received:** 01-08-2022;

**Accepted:** 04-09-2022

**Page No:** 283-288

### Abstract

Ilidza is one of the municipalities of the Sarajevo city located on its western edge, at a distance of about 12 km from the city center. Most of the territory of the Ilidza Municipality is in the basin of the Bosna river, where the popular excursion site 'Vrelo Bosne' is located. In the first few kilometers of the stream, Bosna receives three right tributaries: Zeljeznica, Dobrinja and Miljacka, and one left tributary, Zujevina, and Rakovacki potok (Rakovacki stream). The first human settlements in the area of today's Ilidza date back to the Neolithic period. The Neolithic settlement of Butmir (3500-2500 BC) is located on the banks of the Zeljeznica river, and was archaeologically discovered in 1893-1896. In the first half of century, the Sarajevo area became part of the Roman Empire. The administrative and cultural center of Sarajevo Field was the 'Aquae S.' settlement built on the area of today's Ilidza. The Ottoman period (15-19 century) gave its name to this settlement. 'Iladz' is an old Turkish word that means 'medicine', that which gives health to man and characterized and defined this locality of water and air. During the period of the Austro-Hungarian Monarchy (1878-1918), Ilidza and its surroundings developed into a built and arranged area. The old Turkish spa has been modernized on the model of the bathing centers of Europe at the time. In Socialist Yugoslavia, Ilidza was a large industrial center and ranked fifth in Bosnia and Herzegovina in terms of economic strength. The aim of this work is to present two buildings on Ilidza from the 'time of transition', i.e. construction after the war (1992-1995).

**Keywords:** Butmir culture, Aqua S., Vrelo Bosne, Ilidza, "ASPEK", "TMP Ahmetspahic"

---

### 1. Introduction

Ilidza is one of the municipalities of the Sarajevo city located on its western edge, at a distance of about 12 km from the city center. The relief of the Ilidza area is of different shape, from typical plain (28%) to hilly and mountainous (72%). The area of Mount Igman naturally limited the municipality on the southwest side. The slopes of Mount Igman form a natural amphitheater going from Krupac in the east, through Hrasnica to Blazuj and Raskrsce in the west. Most of the territory of the Ilidza Municipality is in the basin of the Bosna river, where the popular excursion site 'Vrelo Bosne' is located. In the first few kilometers of its course from the source, the Bosna river receives three right tributaries: Zeljeznica, Dobrinja and Miljacka and one left, Zujevina, with the Rakovacki stream. Up to 600 meters above sea level, a moderate continental climate is represented, and above that altitude it gradually changes to a continental-mountain climate. Temperature inversions, when an inversion layer is formed, are frequent and characteristic occurrences during winter in the basin parts. On average, there are 124 days with rain and 42 with snow on Ilidza. The maximum height of the snow cover is 100 cm.

The first human settlements in the area of today's Ilidza date back to the Neolithic period. The Neolithic settlement of Butmir (3500-2500 BC), located on the banks of the Zeljeznica river, was archaeologically discovered in 1893-1896. The remains of 96 dugouts were excavated, with rich finds of stone tools and weapons and animal bones. The greatest value from that period is represented by examples of ceramic production, especially vessels with ornamental decorations and female statuettes. At that time, the inhabitants of Butmir were engaged in agriculture, animal husbandry and hunting <sup>[1]</sup>.

According to the finds from this archaeological area, one period of the civilizational development of Bosnia and Herzegovina was called 'Butmir culture'. A large number of hillforts bear witness to the population in the time of the Illyrians.

In the first half of century, the Sarajevo area became part of the Roman Empire. The administrative and cultural center of Sarajevo Field was the 'Aqua S.' settlement built on the area of today's Ilidza <sup>[2]</sup>. It was a beautiful and richly decorated provincial town, which combined an administrative center and a spa. 'Aqua S.' was built in the 1st century, and life in it continued smoothly until the 5th century. It had the 'status of a colony', and its inhabitants - settled colonists and native, romanized population - were full Roman citizens. Archaeological research has revealed the remains of various buildings, among which residential buildings in the form of a villa and a thermal complex stand out. Some of these buildings have a typical interior layout of a rich Roman house, rooms decorated with valuable mosaics, and the remains of a central heating system were found under the floors. The foundations of Roman buildings, floor mosaics, stone bases, ceramics, jewelry and money have been preserved from this period <sup>[2]</sup>.

The Ottoman period (15-19 century) gave its name to this settlement: 'iladz' is an old Turkish word meaning 'medicine', that which gives health to a person and marked and defined this locality. In that period, Ilidza had a spa character, as well as a place of rest and recreation. Traffic importance existed even then, so a bridge was built over the Bosna river at Pladiste (1530-1550), and its authenticity has been preserved to this day. The wealthier inhabitants of Sarajevo from this period had 'homes' on Ilidza - summer houses, where they stayed for the whole summer. Some of them have been preserved to this day.

During the period of the Austro-Hungarian Monarchy (1878-1918), Ilidza and its surroundings developed into a built and arranged area. The old Ottoman spa has been modernized, modeled after the bathing centers of Europe at the time. Under the direct management of the National Government in Sarajevo, work began on the design and phased arrangement of the Ilidza spa as a whole. At the end of 1895, the hotels 'Igman', 'Hungaria', 'Austria' and 'Bosna' were built. The Spa Park was also arranged with numerous paths, flower alleys, an artificial lake, a pond and a zoo, built sports fields, a hippodrome and other facilities for entertainment. By 1894, the Great Alley was planted, consisting of 726 sycamore trees and a large number of wild chestnut trees. The spa complex is connected to the 'Spring of the Bosna river' by Velika Alley, on which the shores are walled, bridges are built, and numerous walking paths are built. The spa center of Ilidza became famous for its sulfur spring and its medicinal properties, but also for the beauty of its natural and built environment <sup>[2]</sup>.

In socialist Yugoslavia (SFRY), Ilidza was a large industrial center and ranked fifth in Bosnia and Herzegovina in terms of economic strength. 'Fabrika motora Sarajevo' (Sarajevo Engine Factory, FAMOS) had its facilities in the Workers' Settlement of Hrasnica, with over 10,000 employees. It produced engines for cargo trucks (FAP), and especially for the military industry (tanks, armored personnel carriers). Only 1 km from the center of Ilidza was the large industrial

complex of Sarajevo's 'Energoinvest' with production from various technological fields. Among other things, 'Tvrnica thermo-aparata' (Thermo-apparatus factory, TAT) produced and exported separators for nuclear power plants. At that time, automation was a leader in the field of production and complete engineering in the field of automatic regulation of the operation of industrial plants.

Ilidza is rich in cultural and historical heritage. The archaeological area of Butmir, the oldest and most famous archaeological site in Bosnia and Herzegovina, is located on the right bank of the Zeljeznica river, not far from the modern Butmir settlement. The Neolithic settlement was discovered a hundred years ago, and after it an entire group of the younger Neolithic of central Bosnia was named 'Butmir culture'. The ancient urban complex, the Roman settlement, the city municipality of 'Aqua S.' was in the rank of 'colony'. The medieval archaeological site (Vrutci village) lies under the Igman mountain, about 3 km west of Ilidza. In the Crkvina locality, north of the 'Vrelo Bosna', next to the Ilidza - Vrelo Bosna alley, the remains of a pre-Romanesque church and a medieval necropolis of stecaks were discovered. It is one of the oldest churches in central Bosnia and, based on analogies, it can be dated to the second half of the 10th century. The site was declared a national monument of Bosnia and Herzegovina <sup>[3]</sup>. The Dobrinja - Butmir tunnel (known as the 'Tunnel of salvation'), a symbol of the resistance of the inhabitants of besieged Sarajevo during the war (1992-1995), is a testimony of the latest history of the city.

The author of this paper has realized several architectural projects on Ilidza: eight rich houses <sup>[4]</sup>, two villas <sup>[5]</sup>, three hotels <sup>[6]</sup> and several polyfunctional buildings <sup>[6]</sup>, of which he presents two realizations in this paper (Figure 1).



Google Earth: Accessed: August 23, 2022.

**Fig 1:** Two business buildings on Ilidza near Sarajevo by architect Ahmet Hadrovic

## 2. Hotel "TMP Ahmetspahić" on Ilidza near Sarajevo (1999)

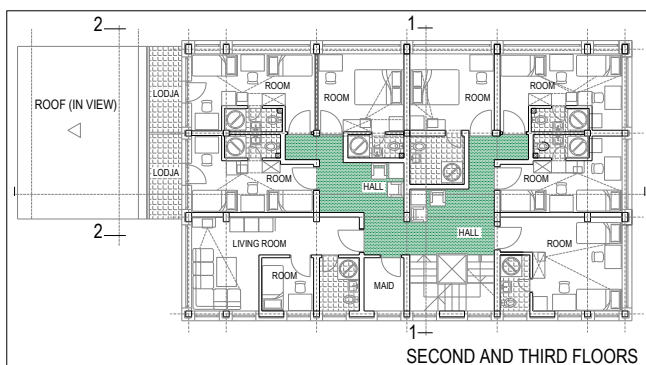
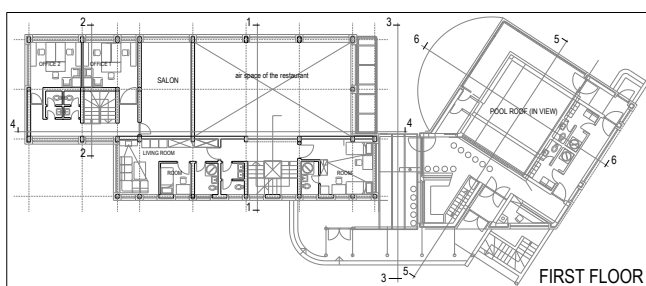
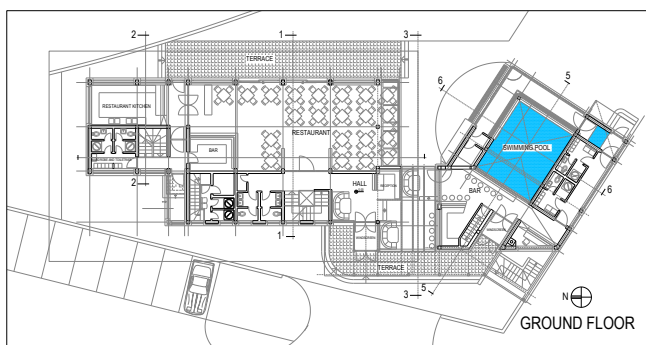
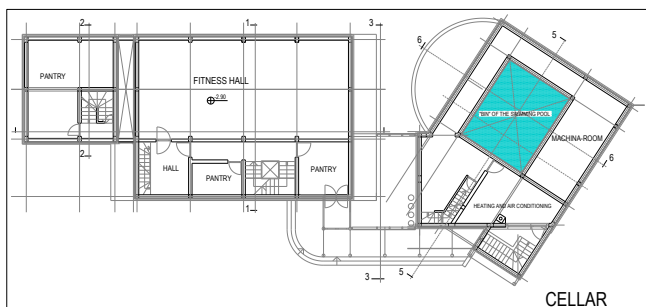
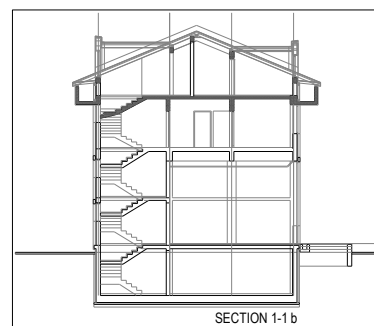
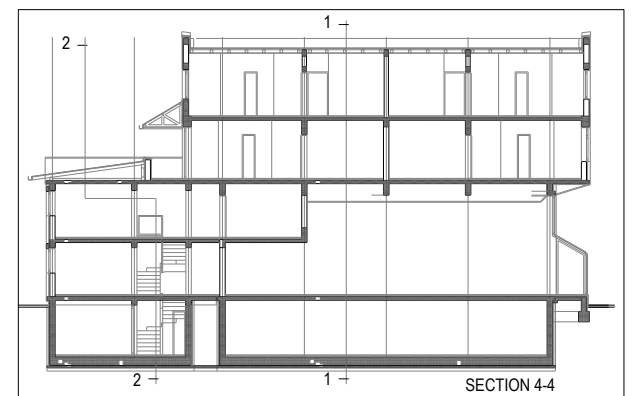
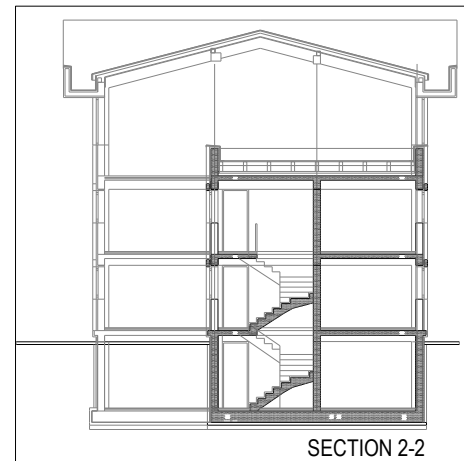
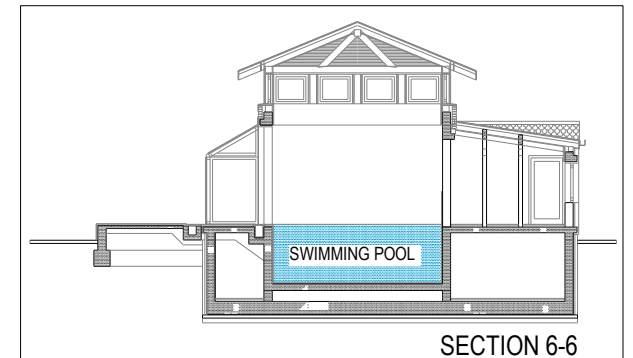
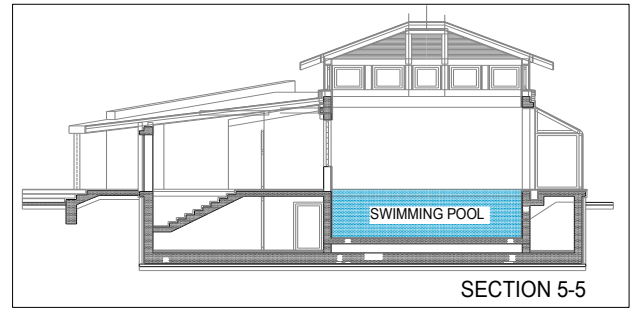
Hotel "TMP Ahmetspahić" is located on Ilidza near Sarajevo, within the new business zone of Ilidza<sup>1</sup> (Geographic coordinates: 43°49'59.95"N, 18°17'47.64"E, Elevation: 496 m). The building was designed as a combination of hotel and business premises (administration) of the young company "TMP Ahmetspahić d.o.o." whose main activity was the sale of oil and oil derivatives.

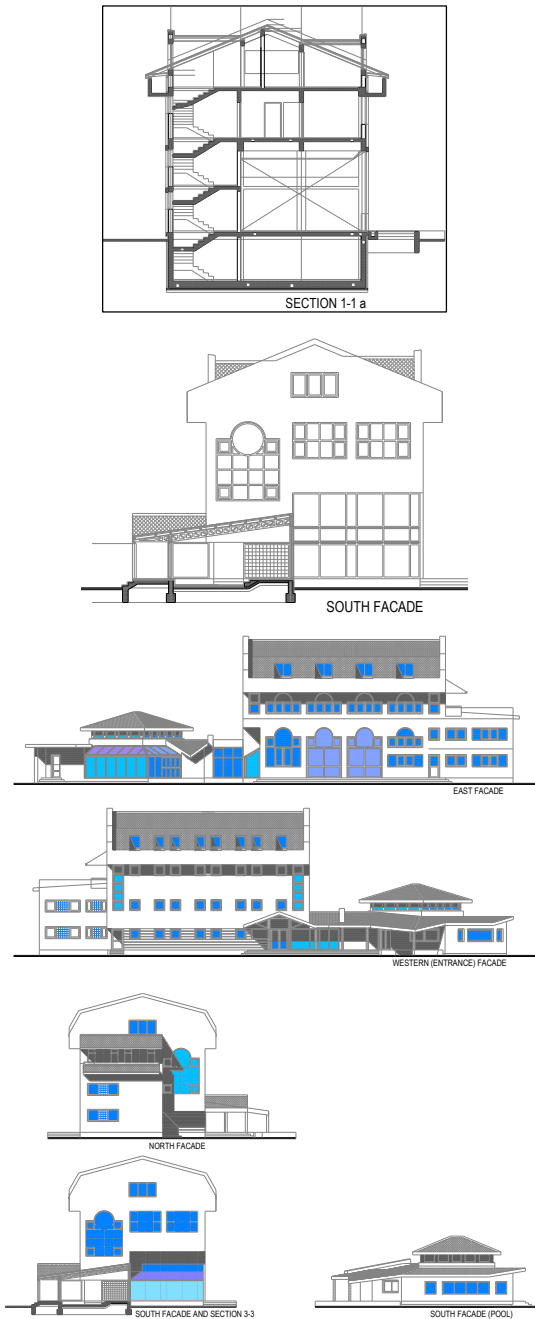
<sup>1</sup> In addition to this hotel, in the new business zone there is one more business facility „TMP Ahmetspahić d.o.o.“,

industrial bakery complex „ASPEK, d.o.o.“, „OBI“, „ORBICO“ and from earlier the Ilidza Carpet Factory.

The building was developed through the basement, ground floor, gallery and first floor. In the basement there are food pantries (for the needs of the hotel), while on the ground floor there is a reception hall for guests, with a reception and a cafe-bar, a kitchen with a restaurant, and a swimming pool for hotel guests (which was also oriented towards the provision of services to external guests). Guest rooms and one suite are organized on the first, second and third floors. Management of the company 'TMP Ahmetspahić d.o.o.' is organized in one part of the building, at the gallery level of the main body of the complex.

Until now, one part of the contents of the 'TMP Ahmetspahić d.o.o.' complex has been arranged, with only the company's administration remaining from the designed purpose, while the hotel part has not been completed. The space designed as a hotel restaurant is now used as a workshop for servicing the company's vehicles (Figures 2, 3).





Source: Author (Project, 1999)

Fig 2: Hotel “TMP Ahmetspahic”, Ilidza near Sarajevo (1999). Project



Source: Author (August 20, 2011)

Fig 3: Hotel “TMP Ahmetspahic”, Ilidza near Sarajevo (1999)

### 3. Industrial bakery “ASPEK” on Ilidza near Sarajevo (2000-2008)

In the environment in which the Author of this paper was educated and in which he realized his first architectural realizations, commercial buildings did not fall into the category of 'attractive architectural tasks'. Moreover, they were considered 'a framework designed by an architect for a given technology'.

The experience in the design and realization of buildings in a wide range of 'economy' has convinced the Author that the judgments about the design of commercial buildings are absolutely wrong.

In the Author's experience, most 'commercial' buildings did not have a single function, but multiple functions, which made the design itself more complex and responsible.

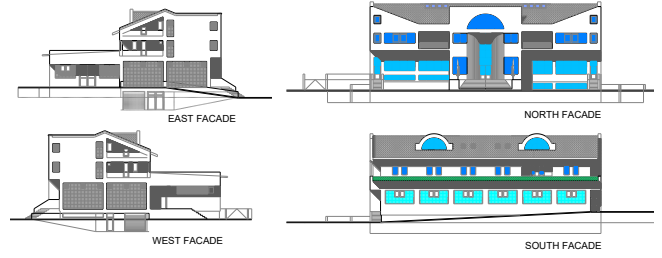
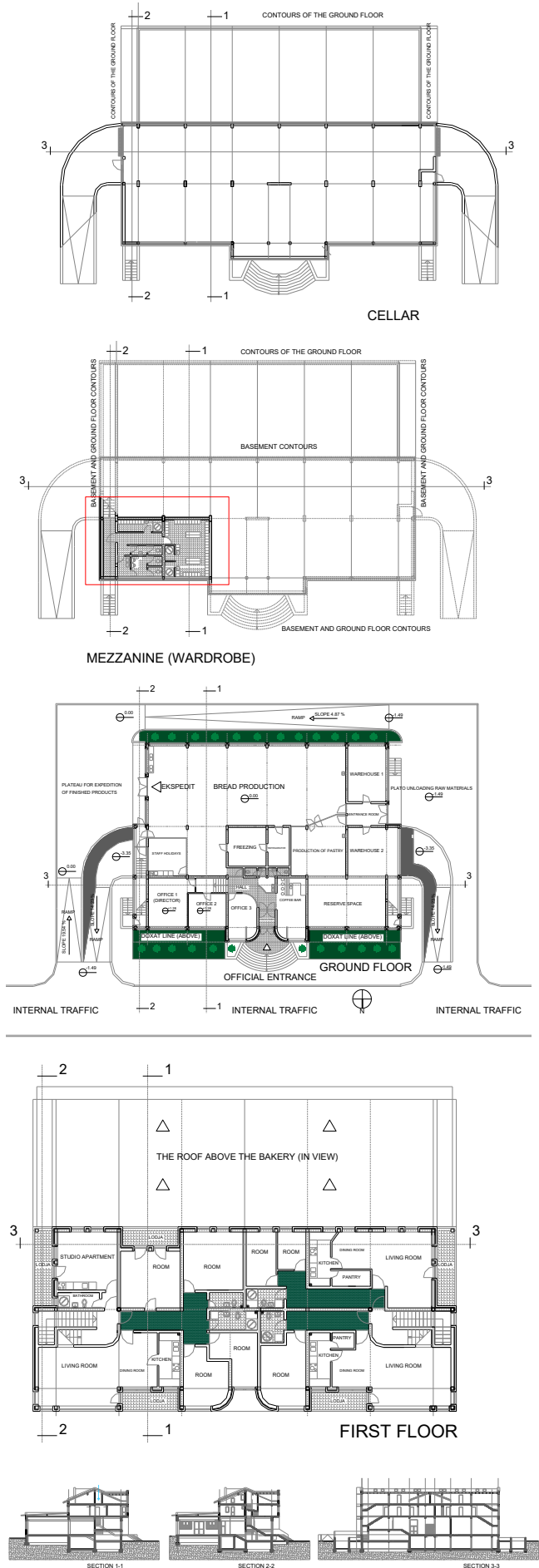
The 'ASPEK' complex is located within the new industrial-business zone Ilidža near Sarajevo, on the left bank of the Željeznica river (Geographic coordinates: 43°49'52.57"N, 18°17'53.58"E, Elevation: 496 m).

The following facilities are organized within the complex: a mill for grinding grains into flour, bread and pastry production, cake production, product dispatch, a rest area for workers and their dressing rooms and sanitary facilities, complex administration, apartments for managers of the company 'ASPEK'.

The central object of the complex was developed through the basement, mezzanine (in the administration area), ground floor, first floor and attic. In the basement, there are several production lines for pastries, as well as changing rooms and sanitary facilities for workers. On the ground floor is the main production facility for bread, pastries and cakes. This facility is located between the mill, on the one hand, and the product warehouse, on the other. On this level, there is a space for workers to rest and the administration of the complex.

On the floor and in the attic of the central building there are several apartments, of different square footage (from two-room to four-room apartments), (Figures 4,5).

Extensive and intensive production is accompanied by a large number of 'ASPEK' sales facilities located in all parts of Sarajevo. Some of them were designed by the Author, and are covered in his books and scientific papers [6, 7].



Source: Author (Project, 2000-2008)

Fig 4: Industrial bakery “ASPEK”, Ilidza near Sarajevo (2000-2008). Project





Source: Author (July 16, 2011. and August 25, 2022.)

Fig 5: Industrial bakery "ASPEK", Ilidza near Sarajevo (2000-2008). Project

significant from the aspect of the study of 'architecture at the time of restitution in Bosnia and Herzegovina' [8,9]. The buildings were built shortly after the war (1992-1995) and are a picture of the transformation of a 'socialist-communist' into a 'liberal-capitalist society'. Ilidza is one of those municipalities of the city of Sarajevo that after the war (1992-1995) experienced a sudden influx of new population and rapid development in every respect. As the place of the oldest inhabited place in the wider area of Sarajevo ('Butmir culture'), then the place of origin of the Roman colony 'Aqua S.', an Ottoman spa town, an Austro-Hungarian complex of hotels and numerous natural attractions (where the source of the Bosna river is the most significant), Ilidza attracted new residents, not only from Bosnia and Herzegovina, but also from Serbia, Montenegro (from the geographical area known as 'Sandžak'). As many as three new universities were built here (Sarajevo School of Science and Technology, International University of Sarajevo (IUS), International Burch University, IBU). For the author of this paper, it was a particular pleasure to design in this historical place.

### References

1. Tanković A, Litzenberg J. Bosnian, Croatian, Serbian: Inherent translanguaging in the linguistic landscape of Sarajevo. *European Journal of Applied Linguistics*. 2021;9(2):183-208.
2. Mesihovic S. Inscriptiones latinarvm saraveonensis. *Historical Searches*. 2008;1:9-68. (in Bosnian)
3. Bublin M. Sarajevo Throughout the History: From a Neolithic Settlement to a Metropolis and Years of Urbicide. *Nacionalna i univerzitetska biblioteka Bosne i Hercegovine*; c2022.
4. Hadrovic A. Several houses by architect Ahmet Hadrovic. *International Journal of Multidisciplinary Research and Publications*. 2022;5(1):22-35. Available from: <http://ijmr.com/wp-content/uploads/2022/06/IJMRAP-V4N12P184Y22.pdf>
5. Hadrovic A. Six urban villas in Sarajevo by architect Ahmet Hadrovic. *International Journal of Multidisciplinary Research and Publications*. 2022;4(12):33-42. Available from: <http://ijmr.com/wp-content/uploads/2022/05/IJMRAP-V4N12P33Y22.pdf>
6. Hadrovic A. 100+ most interesting architectural realizations. Sarajevo: Avicena; c2012.
7. Hadrovic A. Examples of urban design and memorial architecture by architect Ahmet Hadrovic. *European Journal of Science, Innovation and Technology*. 2022;2(3):41-54. Available from: <http://ejsit-journal.com/index.php/ejsit/article/view/111>
8. Hadrovic A. Defining architectural space on the model of the oriental style city house in Bosnia and Herzegovina, Serbia, Montenegro, Kosovo and Macedonia. North Charleston, SC, USA: Booksurge, LLC; c2007. p. 14-15, 16-18.

### Conclusion

The two architectural objects presented in this paper, seen in the context of 'natural' and 'social environment', are extremely